

PRODUCT INFORMATION PACKET

marathon®
Motors

Model No: 056C17G5318

Catalog No: G659

1 HP Explosion Proof Motor, 1 phase, 1800 RPM, 115/208-230 V, 56 Frame, EPFC
Explosion Proof NEMA Motors



Regal and Marathon are trademarks of Regal Beloit Corporation or one of its affiliated companies.
©2020 Regal Beloit Corporation, All Rights Reserved. MC017097E

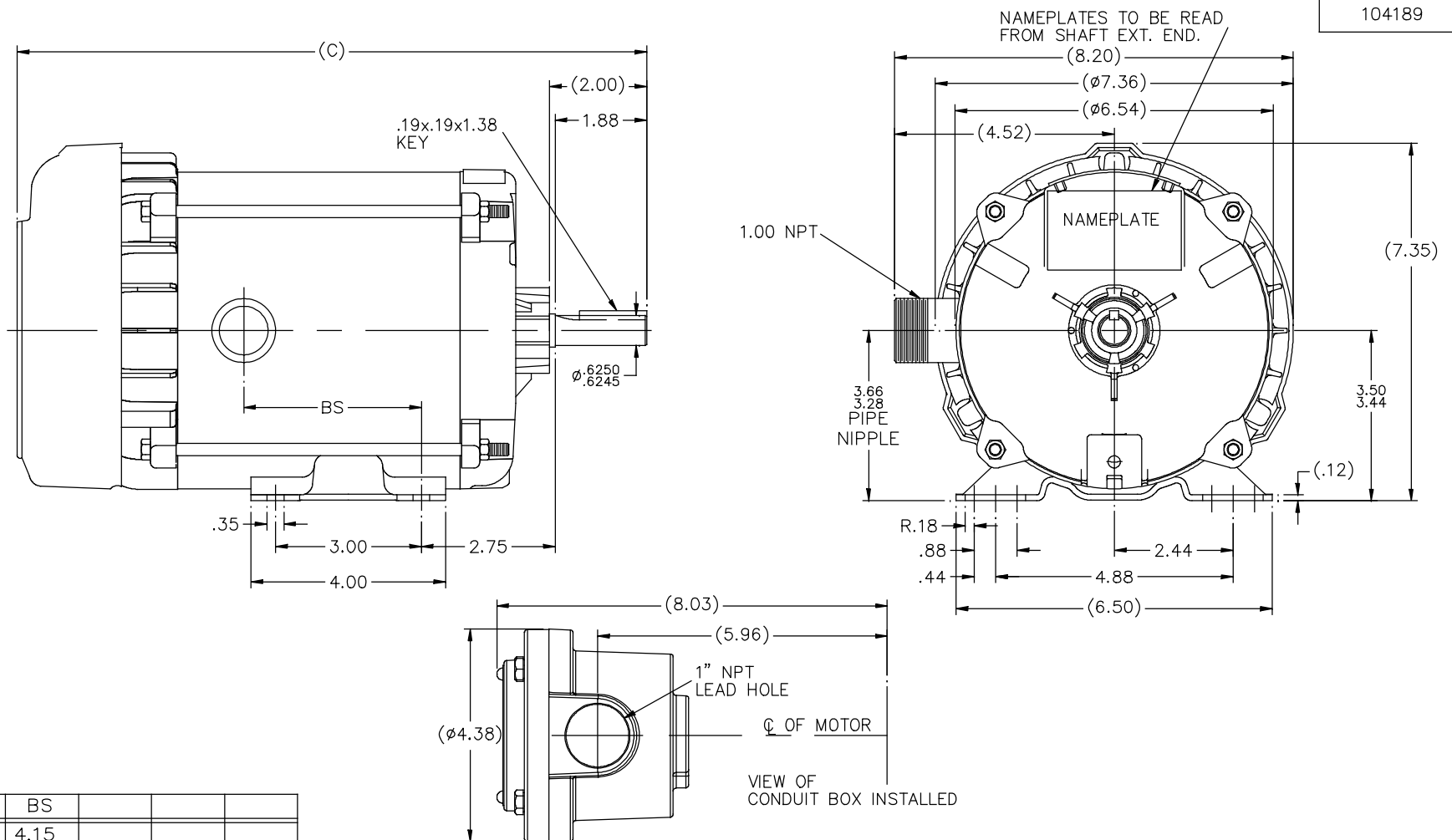
REGAL

Nameplate Specifications

Output HP	1 Hp	Output KW	0.75 kW
Frequency	60 Hz	Voltage	115/208-230 V
Current	13.4/6.8-6.7 A	Speed	1725 rpm
Service Factor	1	Phase	1
Efficiency	72 %	Power Factor	69.5
Duty	Continuous	Insulation Class	B
Design Code	NO DESIGN CODE	KVA Code	J
Frame	56	Enclosure	Explosion Proof Fan cooled
Thermal Protection	Automatic	Ambient Temperature	40 °C
Drive End Bearing Size	6203	Opp Drive End Bearing Size	6203
UL	UL Listed And CSA Certified	CSA	Y
CE	N	IP Code	54
Hazardous Location	EXP PROOF CL I GR C&D CL II GR F&G T3B		


Technical Specifications

Electrical Type	Capacitor Start Induction Run	Starting Method	Across The Line
Poles	4	Rotation	Selective Counterclockwise
Resistance Main	0 Ohms	Mounting	Rigid base
Motor Orientation	Horizontal	Drive End Bearing	Ball
Opp Drive End Bearing	Ball	Frame Material	Rolled Steel
Shaft Type	NEMA 56	Overall Length	14.44 in
Frame Length	7.31 in	Shaft Diameter	0.625 in
Shaft Extension	2 in	Assembly/Box Mounting	F1 ONLY
Connection Drawing	102005-84	Outline Drawing	B-104189-731

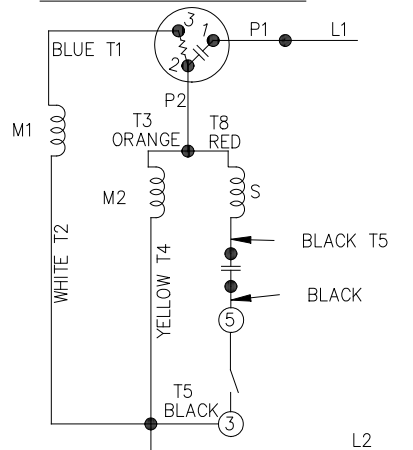


104189

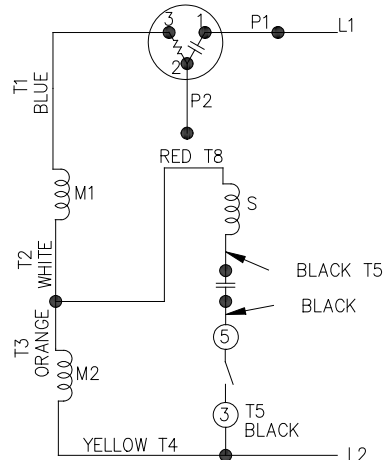
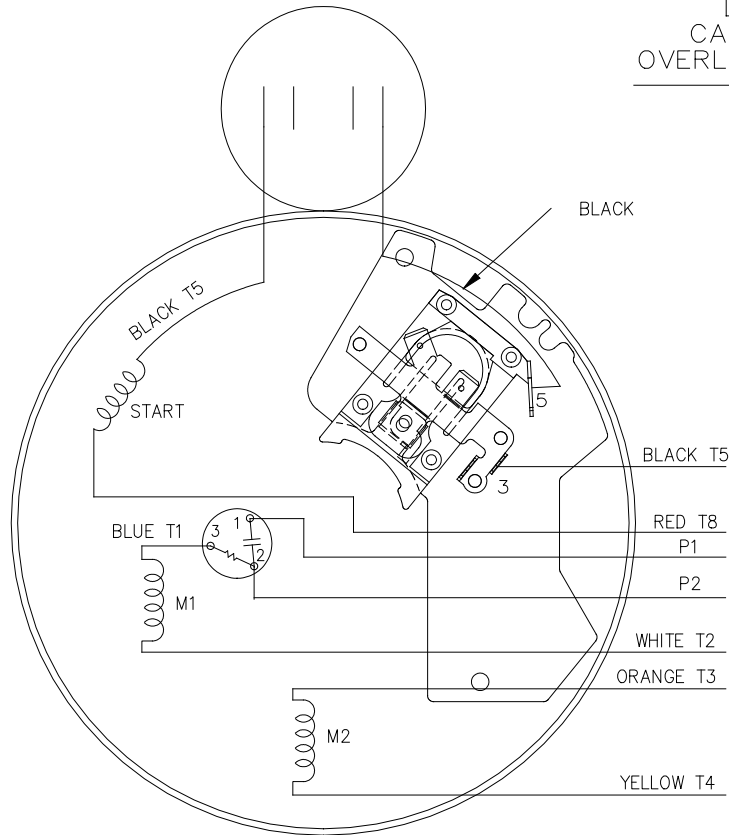
DASH	(C)	BS			
631	13.44	4.15			
681	13.94	4.65			
731	14.44	5.15			
781	14.94	5.65			
831	15.44	6.15			
881	15.94	6.65			
931	16.44	7.15			
981	16.94	7.65			

				TOLERANCES UNLESS SPECIFIED		 Regal Beloit America, Inc.		DRAWN MH 11-20-1996			
				DEC.	INCHES			CHK	ML 12-02-1996		
4	COND. BOX INSTALLED VIEW UPDATED PER ECR-0044571	UD 10/15/13	ST	X	±.1	TITLE OUTLINE 56 FR. - EXP. PR. - TEFC - 1Ø & 3Ø		APPD	GK 12-02-1996		
3	REVISED C'BOX PER CN40784A	JJB 02/23/2007	ML	XX	±.03			SCALE 1=2			
2	ADDED CONDUIT BOX VIEW CN 26686	MRB 03-22-1998		XXX	±.005			REF			
1	NEW DRAWING CN 23099	MH 12-02-1996		XXXX	±.0005			FMF			
NO.	REVISION	BY & DATE	CHK	ANG	±.730"			FINISH			
THIS DRAWING IN DESIGN AND DETAIL IS OUR PROPERTY AND MUST NOT BE USED EXCEPT IN CONNECTION WITH OUR WORK. ALL RIGHTS OF DESIGN AND INVENTION ARE RESERVED. THIS IS AN ELECTRONICALLY GENERATED DOCUMENT - DO NOT SCALE THIS PRINT								RFP	CAD FILE 104189	SIZE B	DRAWING NO. 104189
								DIST WP		PAGE 4	REV. 4

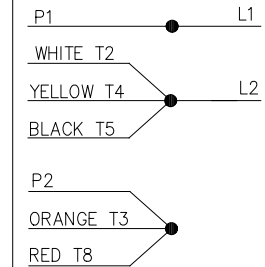
LOW VOLTAGE – C.C.W.



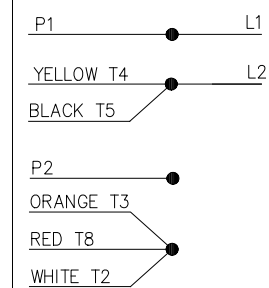
HIGH VOLTAGE – C.C.W.

DUAL VOLTAGE
CAPACITOR START
OVERLOAD SELECT ROT.


LOW VOLT. – C.C.W. ROT.



HIGH VOLT. – C.C.W. ROT.



FOR C.W. ROTATION
EITHER VOLTAGE
INTERCHANGE RED(T8)
WITH BLACK(T5) LEAD

			TOLERANCES UNLESS SPECIFIED		 Regal Beloit America, Inc.	DRAWN PGK 07-16-1996				
			DEC.	INCHES		CHK MRB 07-18-1996				
5	UPDATED TEMPLETE	MVG 12/11/2017	PVR	.X		±.1	APPD GK 07-18-1996			
4	REV'D CONNECTION TO MATCH ROTATION ISAAC 07-2021	JJB 09/05/2007	ML	.XX		±.02	SCALE 5=8			
3	ADDED T NO.'S MU16064	MH 08-09-1997		.XXX		±.005	REF			
2	REDRAWN ON CADD, NO CHANGES	PGK 07-18-1996		.XXXX		±.0005	FMF			
NO.	REVISION	BY & DATE	CHK	ANG		±7'30"	PREV			
THIS DRAWING IN DESIGN AND DETAIL IS OUR PROPERTY AND MUST NOT BE USED EXCEPT IN CONNECTION WITH OUR WORK ALL RIGHTS OF DESIGN AND INVENTION ARE RESERVED THIS IS AN ELECTRONICALLY GENERATED DOCUMENT – DO NOT SCALE THIS PRINT			RFP		CAD FILE 102005_84	SIZE A	DRAWING NO. 102005-84	PAGE OF	REV. 5	
			DIST WP							

CERTIFICATION DATA SHEET

Model#: 56C17G5318 F **WINDING#:** ZC407 R1 3
CONN. DIAGRAM: 102005-84 **ASSEMBLY:** F1 ONLY
OUTLINE: B-104189-731

TYPICAL MOTOR PERFORMANCE DATA

HP	KW	SYNC. RPM	F.L. RPM	FRAME	ENCLOSURE	KVA CODE	DESIGN
1	.75	1800	1725	56	EPFC	J	NO DESIGN CODE

PH	Hz	VOLTS	FL AMPS	START TYPE	DUTY	INSL	S.F	AMB°C	ELEVATION
1	60	115/208-230	13.4/6.8-6.7	ACROSS THE LINE	CONTINUOUS	B3	1.0	40	3300

FULL LOAD EFF: 72	3/4 LOAD EFF: 70	1/2 LOAD EFF: 64.3	GTD. EFF	ELEC. TYPE	NO LOAD AMPS
FULL LOAD PF: 69.5	3/4 LOAD PF: 60.5	1/2 LOAD PF: 49	0	CAP START IND RUN	8.8 / 4.4

F.L. TORQUE	LOCKED ROTOR AMPS	L.R. TORQUE	B.D. TORQUE	F.L. RISE°C
48.2 LB-FT	69.4 / 34.7	145 LB-FT 0	122 LB-FT -	70

SOUND PRESSURE @ 3 FT.	SOUND POWER	ROTOR WK^2	MAX. WK^2	SAFE STALL TIME	STARTS /HOUR	APPROX. MOTOR WGT
- dBA	- dBA	0 LB-FT^2	- LB-FT^2	- SEC.	-	0 LBS.

*** SUPPLEMENTAL INFORMATION ***

DE BRACKET TYPE	ODE BRACKET TYPE	MOUNT TYPE	ORIENTATION	SEVERE DUTY	HAZARDOUS LOCATION	DRIP COVER	SCREENS	PAINT
STANDARD	STANDARD	RIGID	HORIZONTAL	FALSE	EXP PROOF CL I GR C&D CL II GR F&G T3B	FALSE	NONE	GRAY (POWDER)

BEARINGS		GREASE	SHAFT TYPE	SPECIAL DE	SPECIAL ODE	SHAFT MATERIAL	FRAME MATERIAL
DE	OPE						
BALL	BALL	POLYREX EM	T	NONE	NONE	1144 STRESSPROOF (C-223)	ROLLED STEEL
6203	6203						

THERMO-PROTECTORS				THERMISTORS	CONTROL	SPACE /n HEATERS
THERMOSTATS	PROTECTORS	WDG RTDs	BRG RTDs			
NONE	AUTOMATIC	NONE	NONE	NONE	FALSE	NONE VOLTS

If Inverter equals NONE, contact factory for further information

*
N
O
T
E
S
*

INVERTER TORQUE: NONE
INV. HP SPEED RANGE: NONE
ENCODER: NONE
NONE NONE
NONE NONE PPR
BRAKE: NONE NONE
NONE P/N NONE
NONE NONE
NONE FT-LB NONE V NONE Hz

DATE: 06/27/2017 07:19:01 AM
 FORM 3531 REV.3 02/07/99
 ** Subject to change without notice.


MARATHON ELECTRIC CORPORATION

TYPICAL PERFORMANCE CURVE for AC MOTOR

Customer

Curve at

230

Volts

 HP 1.00

 PHASE 1

 Model No 56C17G5318
60

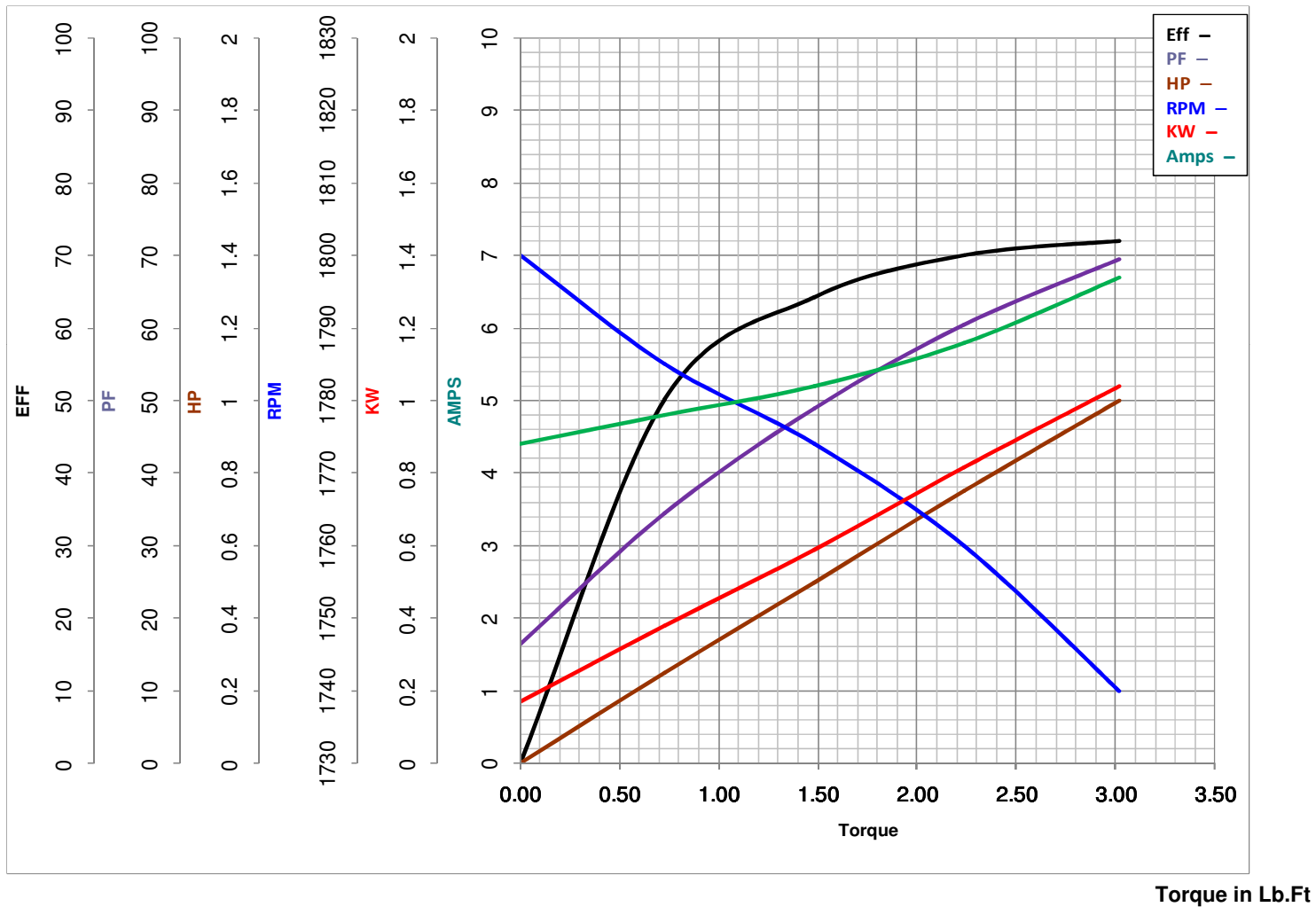
HZ

1 HP

 VOLTS 115/208-230

 Catalog No G659

 HZ 60

 RPM 1725


Torque in Lb.Ft

 FL TORQUE 3.019 Lb.Ft

 BD TORQUE 7.6 Lb.Ft

 LR TORQUE 8.906 Lb.Ft

WINDING ZC407-3

 FL AMPS 13.4/6.8-6.7

 PU TORQUE 6.3 Lb.Ft

 LR AMPS 34.7

Date 1/10/2019